

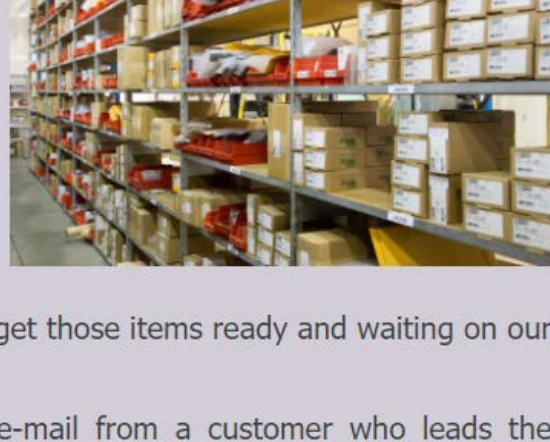


Hydronic Connection

A publication of J.M. O'Connor, Inc. and the Taco Distribution Center

The Taco Distribution Center - Your One-Stop Parts Shop!

If you've been a customer for a while, you already know that the TDC works diligently to keep a wide-range of Taco replacement parts in stock and ready for immediate shipment. In her role as TDC Manager and Buyer, Kim makes it a priority to have an extensive stock of wholesale and commercial parts readily available for you when you need them. She works hard to identify new needs as they arise, and get those items ready and waiting on our shelves.



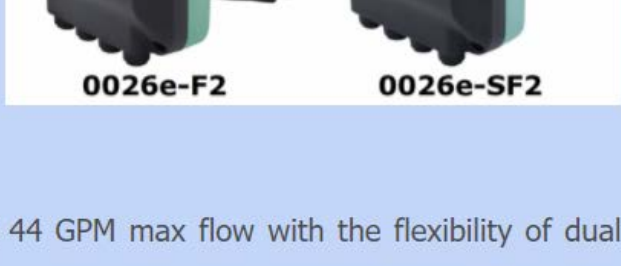
It isn't uncommon to get a call or e-mail from a customer who leads the conversation with, "I'm sure this is a long shot, but do you have (fill here with obscure Taco part)?" Nothing feels better than to be able to answer that question with a, "Yes! We do!" We stock an extensive list of Taco replacement parts for obsolete pump models as well as those for current model pumps.

In addition to having an outstanding parts stock, Kim and Shannon are both readily available to assist in determining which parts you need to get your customers out of a crisis and up and running. Our Taco Distribution Center website has many parts sheets available for current commercial pump models, with clickable links for you to view and download.

Call, [e-mail](#), or stop by www.tacodistribution.com today and let us help you with all of your Taco parts, pump and accessory needs!

The New Taco 0026e ECM High-Efficiency Circulator

Taco's latest addition to the ECM family is the 0026e, which is currently projected to be on the TDC shelves in April, if production goes as planned.



This newest ECM model will be available in cast iron model number 0026e-F2, and stainless steel model number 0026e-SF2.

Some of its features include:

- Up to 26 feet of head and 44 GPM max flow with the flexibility of dual voltage power input
- Easy-to-use dial, allowing you to choose between activeADAPT® (Taco's self-adjusting proportional pressure), Low, Medium, High and 0-10V DC analog or PWM digital input.
- SureStart® automatic unblocking and air purging
- BIO Barrier® black iron oxide protection
- Flange nut-grabbers
- Dual electrical knockouts
- Rotatable control covers.

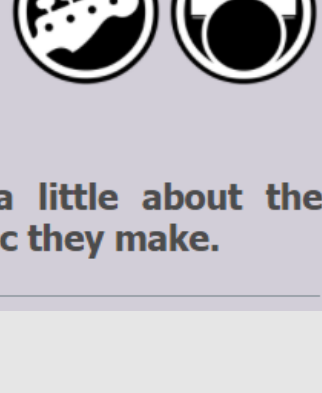
The Taco 0026e Catalog and Submittal sheets are available to download via the following links:

[0026e Catalog](#)

[0026e Submittal](#)

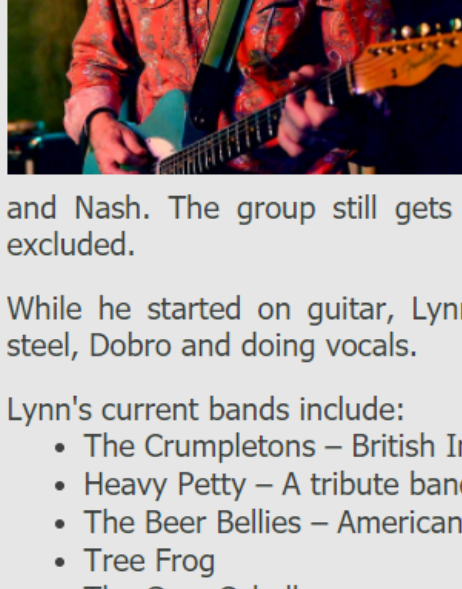
We Don't Just Make Pumps...We Make Music!

One very interesting fact about the staff at J.M. O'Connor is that, among our small group, there is a large amount of musical talent! Many of the folks at our Lenexa branch have a long history of being professional, performing musicians who continue to play and sing in front of audiences when they aren't working their "real jobs".



We thought it would be fun to share a little about the talented folks at JMO and the kinds of music they make.

Lynn Piller - Owner and President



Lynn started playing guitar at age 14, when the Beatles exploded on the scene. He says he wanted to play in a band because his friends did and he thought it would be cool!

His first gigging band was formed in the 60's called The Coming Thing. While he has played with numerous groups over the years, the band that had the longest run was Tree Frog in the 70's. They played original material influenced by groups like the Eagles, Neil Young and Crosby, Stills and Nash. The group still gets together annually for reunion shows, 2020 excluded.

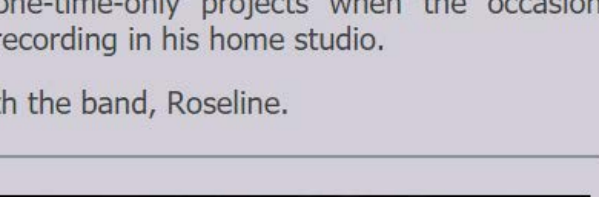
While he started on guitar, Lynn can also be seen playing pedal steel, lap steel, Dobro and doing vocals.

Lynn's current bands include:

- The Crumpletons – British Invasion and other 60's music
- Heavy Petty – A tribute band to Tom Petty and the Heartbreakers
- The Beer Bellies – Americana style music
- Tree Frog
- The Gray Caballeros

Jim Piller - Chief Financial Officer

Jim, began playing drums at the young age of 5. Once in college, he began playing bass as well.



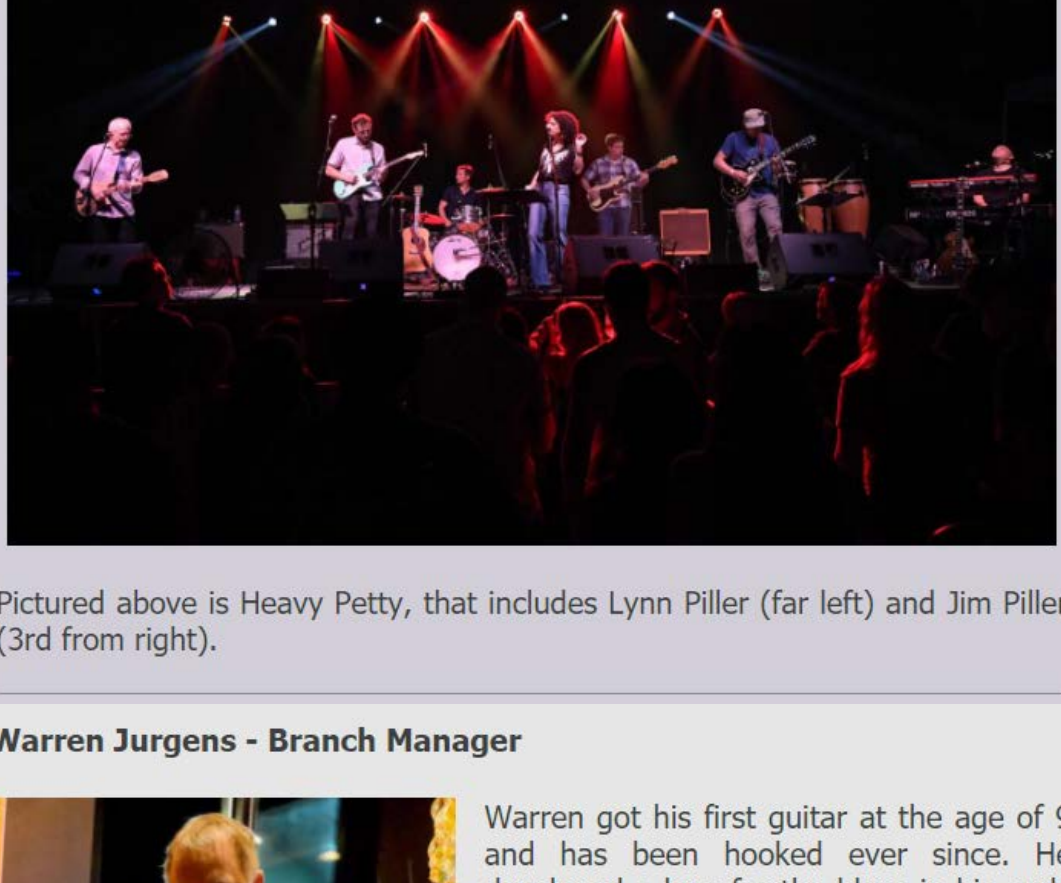
Like his dad, Lynn, he played in his first band as a young teen and has been gigging ever since.

Jim's current lineup includes:

- Roseline - Americana Rock
- Happy Nothing - Indie
- Heavy Petty - A tribute band to Tom Petty and the Heartbreakers

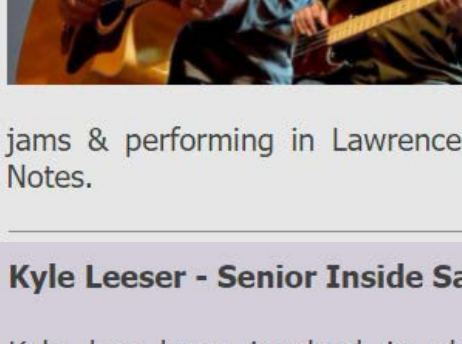
Jim also enjoys doing special, one-time-only projects when the occasion presents itself and he loves audio recording in his home studio.

Jim is pictured above, far right, with the band, Roseline.



Pictured above is Heavy Petty, that includes Lynn Piller (far left) and Jim Piller (3rd from right).

Warren Jurgens - Branch Manager



Warren got his first guitar at the age of 9 and has been hooked ever since. He developed a love for the blues in his early 20's.

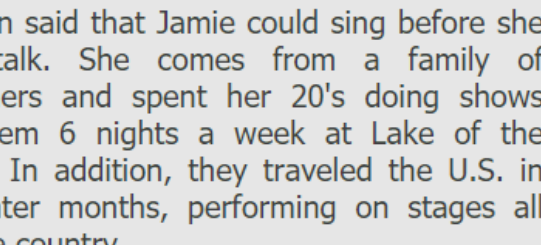
Warren joined the Nashville Songwriter's Association in his 30's and started writing his own original material.

He is a singer/songwriter whose style can be described as bluesy Americana. Warren loves to record, engineer, and produce in his impressively equipped home studio.

Currently, you can find him hosting local jams & performing in Lawrence, KS, with the group Easy G and The Blue Notes.

Kyle Leeser - Senior Inside Sales

Kyle has been involved in choral music for most of his life. In high school he performed with the KMEA district choir for several years, which is an auditioned group. He also was selected to perform with the KMEA Kansas state choir.

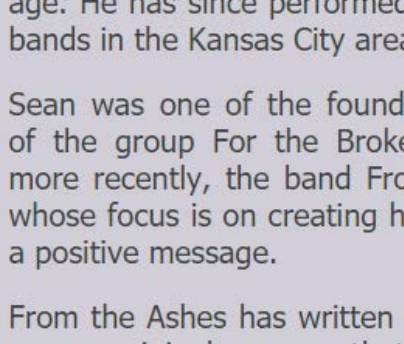


Since then, in addition to numerous church choirs, Kyle has had the honor of performing with the Kansas Symphony Chorus for 5 years.

Music has always been a huge part of Kyle's life and he's been truly grateful that he has been able to continue his musical endeavors while working at JMO.

Kyle is pictured with the Kansas Symphony chorus above, bottom row, 6th from the right.

Jamie Malone - Project Manager



It's been said that Jamie could sing before she could talk. She comes from a family of performers and spent her 20's doing shows with them 6 nights a week at Lake of the Ozarks. In addition, they traveled the U.S. in the winter months, performing on stages all over the country.

Jamie currently sings and plays bass guitar with several bands. She performs around Kansas, Missouri and Nebraska with classic country music, and she plays locally with Middle Creek, which includes country music with a mix of classic rock. In addition, a new group is currently in the works that is so new it has yet to be named! They will play a variety of country, oldies and 60's/70's rock.

Jamie also does several dates a year with her family in Branson, MO, as part of a show produced by her brother, Matt, called Matt Gumm and Company, at the Clay Cooper Theatre.

Jamie can also be heard doing background vocals on many of the tracks on Branch Manager, Warren's, self-titled album which features his original songs. In addition, Jamie and Warren have had opportunity to perform together several times at local venues.

Sean Devins - Warehouse Manager & Pump Assembler

Sean is an amazing drummer whose first love for percussion started at a young age. He has since performed with several bands in the Kansas City area.

Sean was one of the founding members of the group For the Broken, and then more recently, the band From the Ashes whose focus is on creating hard rock with a positive message.

From the Ashes has written and recorded many original songs that they have performed all over the Midwest. They have developed a very active following over the years which has brought them a lot of success in the Kansas City and surrounding areas.



J.M. O'CONNOR, INC.